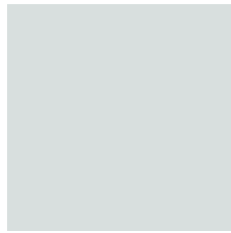


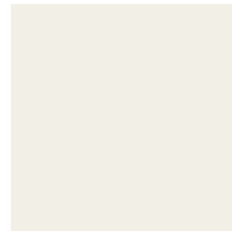
E001 Cooing Pigeon
NCS S 2005-R80B
R 193 G 198 B 201



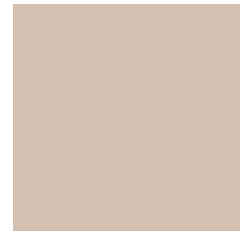
E007 Sweet Dreams
NCS S 1002-B
R 218 G 222 B 221



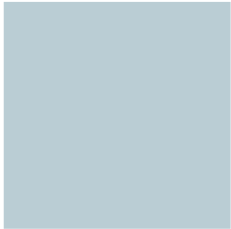
E013 Feather Light
NCS S 1500-N
R 212 G 211 B 207



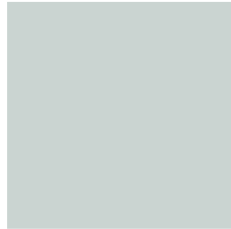
E019 Whooper Swan
NCS S 0500-N
R 241 G 239 B 232



E025 Coffee Pause
NCS S 2005-Y40R
R 206 G 192 B 176



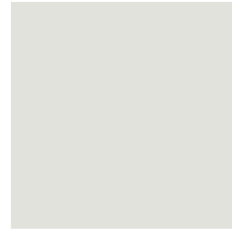
E002 Ice Crystal
NCS S 1510-R90B
R 191 G 205 B 211



E008 Summer Haze
NCS S 1502-B
R 205 G 211 B 209



E014 Magical Mist
NCS S 2000-N
R 201 G 200 B 195



E020 Frozen World
NCS S 1000-N
R 225 G 225 B 220



E026 Sugar Rush
NCS S 4010-Y50R
R 171 G 148 B 133



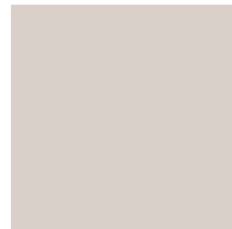
E003 Late Afternoon
NCS S 3010-R90B
R 155 G 169 B 178



E009 Arctic Ocean
NCS S 2010-R80B
R 178 G 190 B 199



E015 Philosopher's Stone
NCS S 3000-N
R 183 G 180 B 172



E021 Woodnote
NCS S 1502-Y50R
R 215 G 209 B 201



E027 Brisky Hare
NCS S 5010-Y30R
R 149 G 127 B 108



E004 Reindeer Ride
NCS S 4005-R80B
R 147 G 154 B 158



E010 Wishing Well
NCS S 3020-R90B
R 133 G 159 B 176



E016 Muddy Paws
NCS S 4502-Y
R 150 G 147 B 139



E022 Comfy Linen
NCS S 2005-Y50R
R 203 G 192 B 179



E028 Sneaky Stoat
NCS S 5005-Y50R
R 145 G 133 B 124



E005 Ocean Floor
NCS S 6010-R70B
R 105 G 111 B 123



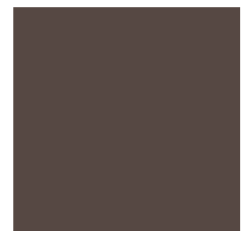
E011 Heavy Rain
NCS S 5020-R90B
R 97 G 120 B 136



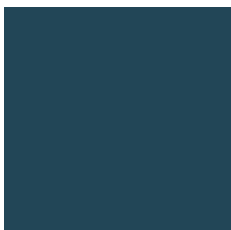
E017 Playful Otter
NCS S 6005-Y80R
R 126 G 115 B 111



E023 Mushroom Pie
NCS S 5005-Y20R
R 147 G 136 B 123



E029 Hunter's Hut
NCS S 8005-Y80R
R 84 G 73 B 70



E006 Blueberry Curd
NCS S 7020-R90B
R 51 G 72 B 87



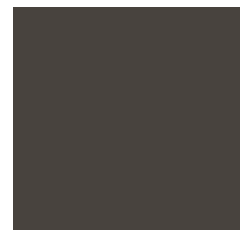
E012 Midnight Hour
NCS S 6020-B
R 74 G 101 B 113



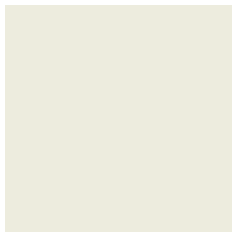
E018 Mighty Bear
NCS S 7502-Y
R 95 G 92 B 86



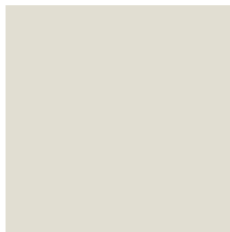
E024 Faithful Shadow
NCS S 7500-N
R 94 G 94 B 93



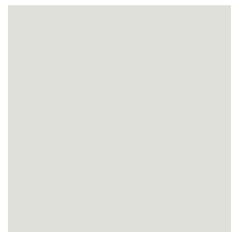
E030 Carpenter's Art
NCS S 8502-Y
R 72 G 70 B 65



E031 Fairy Tale
NCS S 0603-G80Y
R 237 G 235 B 222



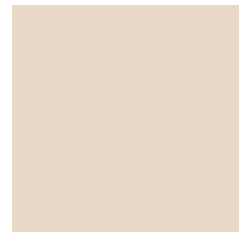
E037 Timeless Time
NCS S 1002-Y
R 224 G 221 B 210



E043 Frosted Pond
NCS S 1002-G
R 222 G 224 B 217



E049 Young Love
NCS S 1015-Y90R
R 232 G 199 B 191



E055 Harvest Feast
NCS S 1005-Y30R
R 229 G 217 B 199



E032 Fresh Spring
NCS S 1505-G80Y
R 213 G 212 B 194



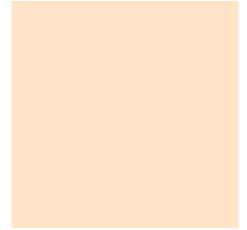
E038 Witty Goblin
NCS S 2502-Y
R 191 G 188 B 177



E044 Moonwake
NCS S 2002-Y
R 201 G 198 B 189



E050 All Peachy
NCS S 1515-Y70R
R 222 G 188 B 172



E056 Midsummer Magic
NCS S 0510-Y30R
R 250 G 227 B 199



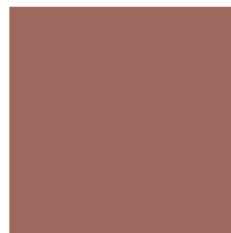
E033 Breezy Meadow
NCS S 2010-G50Y
R 195 G 198 B 175



E039 Granit Stone
NCS S 2502-B
R 182 G 187 B 187



E045 Howling Wolf
NCS S 4502-B
R 143 G 147 B 19



E051 Woolen Stocking
NCS S 5020-Y80R
R 145 G 107 B 98



E057 Morning Glimmer
NCS S 1015-Y30R
R 241 G 209 B 173



E034 Mystical Garden
NCS S 3010-G30Y
R 168 G 177 B 158



E040 Peaceful Mind
NCS S 3502-Y
R 168 G 166 B 158



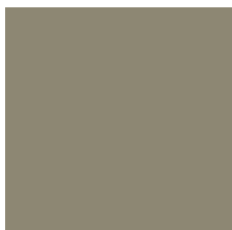
E046 Smoky Water
NCS S 6500-N
R 112 G 112 B 110



E052 Cranberry Sauce
NCS S 5040-Y80R
R 126 G 71 B 64



E058 Sun Kissed
NCS S 1030-Y20R
R 246 G 199 B 141



E035 Embracing Moss
NCS S 5010-G70Y
R 138 G 135 B 115



E041 Hazy Horizon
NCS S 4500-N
R 149 G 149 B 147



E047 Grand Storm
NCS S 7502-B
R 86 G 90 B 91



E053 Spicy Chili
NCS S 4550-Y80R
R 130 G 65 B 58



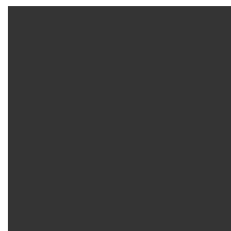
E059 Country House
NCS S 2050-Y20R
R 217 G 155 B 84



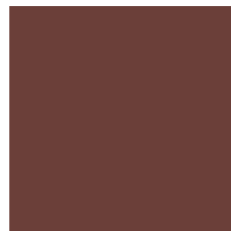
E036 Weald
NCS S 7010-G10Y
R 86 G 98 B 87



E042 Backwoods
NCS S 6502-Y
R 113 G 111 B 105



E048 Sweet Liquorice
NCS S 9000-N
R 56 G 56 B 56



E054 My Beloved
NCS S 7020-Y80R
R 97 G 66 B 60



E060 Autumn Ocher
NCS S 3050-Y20R
R 191 G 134 B 69

ENG Colour samples are as close to the real as printing technology allows. Test painting is always recommended on a small area of the wall surface of the house. Allow the paint to dry and take your time to observe the color at different times of the day.

EST Värvinäidised on tegelike värvidega võimalikult sarnased. Tee proovivärvimine väikesel pinnal. Lase värvil kuivada ja kontrolli värvitooni sobivust päeva eri aegadel.

RUS Образцы цветов настолько близки к оригинальным цветам, насколько технически возможно. Сделайте пробную окраску на небольшой площади. Дайте краске высохнуть и проверьте оттенок в разное время в течение суток.

FIN Värimallit ovat niin lähellä todellisia kuin painoteknisesti on mahdollista. Koemaalasta talon seinäpintaan tai irtotelevyyn suositellaan aina. Anna maalin kuivua ja tarkastele sävyä rauhassa vuorokauden eri aikoina.

SWE Färgproverna är så nära verkliga som trycktekniken tillåter. Provmålningen alltid rekommenderas för väggens yta. Låt färgen torka och titta den i fred vid olika tider på dagen.